



Your partner in autoclave and
thermosetting technologies

A close-up, black and white photograph of a carbon fiber woven texture, showing a repeating diamond pattern. The texture is slightly curved, creating a sense of depth.

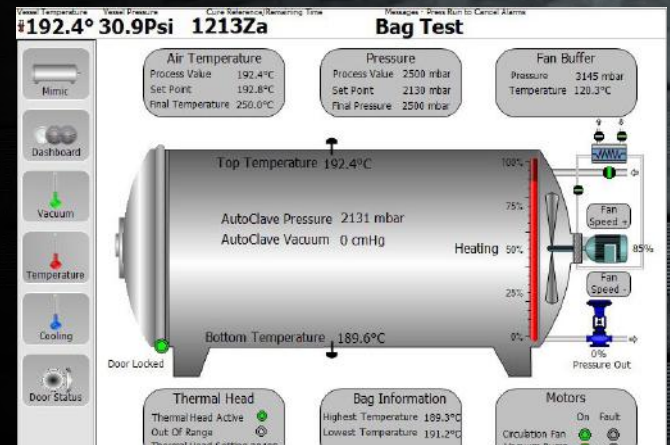
AUTOCLAVES

Roaches is a UK based engineering company with over thirty years of experience of designing and manufacturing autoclaves to meet customer requirements



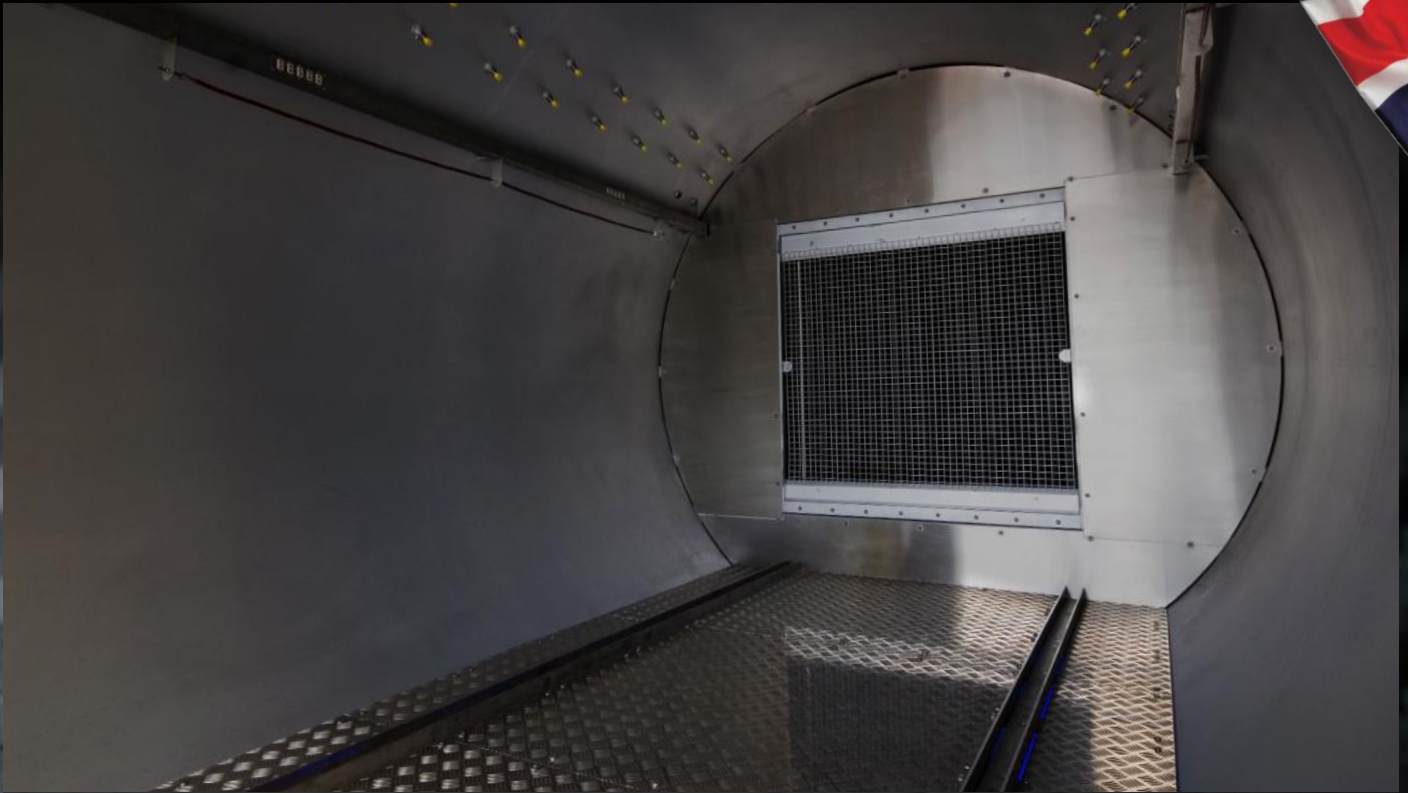
SYSTEM FEATURES

- Fully programmable fan speeds for control of air circulation
- Modular cartridge heaters for easy replacement
- Analogue control of heaters for improved accuracy
- Full monitoring of individual vacuum zones
- Integrated vacuum pump and pipe system
- Touch screen PC control system with fully traceable historical cycle data



Powered By





The curing process for composite materials carried out in Roaches autoclaves is fully controlled by the PC based Adaptive Control System (ACS) that has been developed over many years. Using ACS software all the parameters involved in the cycle such as temperature, pressure and vacuum can be programmed and controlled to the most precise level and accurately repeated week after week.

Vacuum levels on each individual zone can be monitored and controlled and in the case of bag leakages which can result in a drop in vacuum to critical levels, can be isolated, preventing the failure of other components that may be in the same cure process.

The accurate control of all these variables is critical to get the repeatable qualities required in the manufactured components and parts.

TECHNICAL SPECIFICATIONS

LABORATORY UNITS

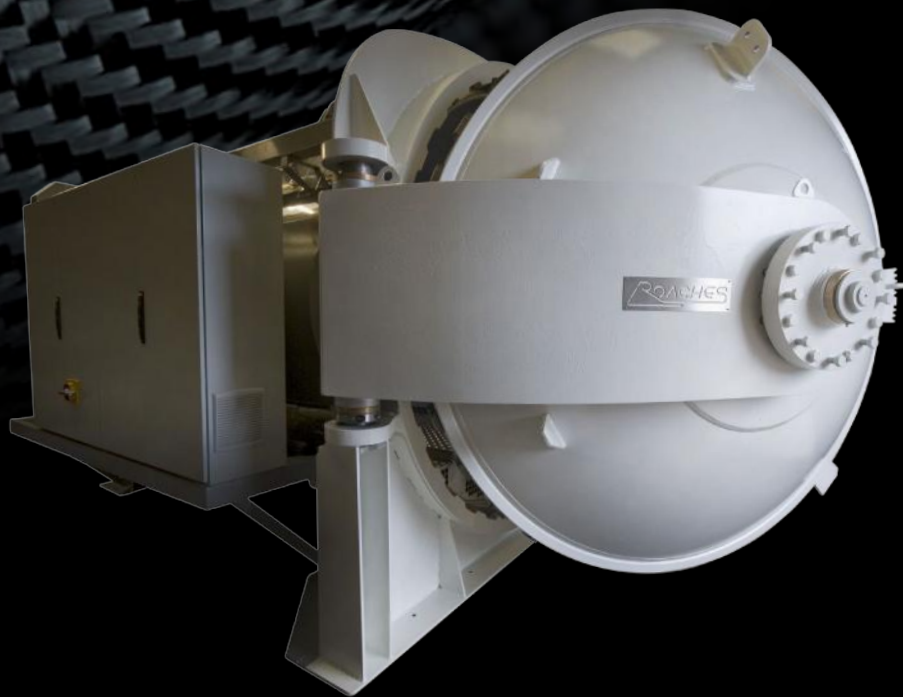
DIAMETER: 0.6 meters - 0.8 meters
LENGTH: 0.8 meters - 2.0 meters
ZONES: Up to 8 Zones

DEVELOPMENT UNITS

DIAMETER: 0.8 meters - 6.0 meters
LENGTH: 1.0 meters - 8.0 meters
ZONES: To Suit



MADE IN ENGLAND TO THE
HIGHEST SPECIFICATIONS



☎ +44 (0)1924 420083 ✉ sales@roaches.co.uk 🌐 www.roaches.co.uk

Unit 11 Springwell 27, Dark Lane, Birstall, West Yorkshire, England, WF17 9LN