

"Your monitoring specialist"  
certified ISO 9001 + ISO 14001



## Crimping Line

# Press Analyser PAL3001

Press analysis tool for crimping presses



Press Analyser PAL3001

The mass production of wiring harnesses, especially in the automotive supply industry must meet and be verified according to the highest quality standards. The combination of state-of-the-art technology and long-term experience in the wire harness business makes the PAL3001 to a most innovative and useful tool for the quality control in the wire harness production.

## Performance Features

- **Compact:** precise force control, height measurement and evaluation electronics in one device
- **Intelligent:** sensor signals are processed by the integrated micro controller
- **Comfortable, because battery-powered:** no need to look for a mains plug
- PAL3001 suits fully automatically the machine speed
- "Slow motion" function for protection of press analyser and crimping press
- Shut height settings possible with four different counterpoises (10 kN, 8 kN, 6 kN, 4 kN)
- Measuring of the force and shut height stability under production conditions
- Simple operation via PC-based operator interface
- All settings are done automatically
- Programmable clock generator
- Simultaneous determination of the analysing capability of the crimp force monitor CFM MX via serial interface
- Signal evaluation and trend monitoring online and offline available
- Packing and storage in a stable and extra designed aluminium box



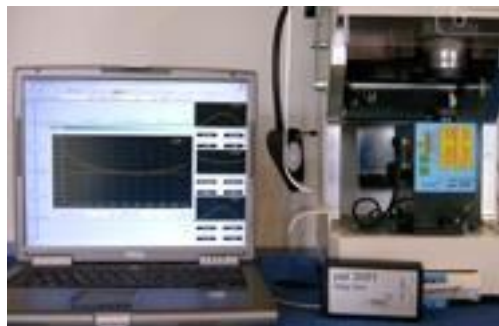
C-tec Cable technologies GmbH & Co.KG  
Ilzstalstrasse 11 Tel.: +49 (0) 8554 – 94 23 9-0  
D-94513 Schönberg Fax: +49 (0) 8554 – 94 23 9-20

eMail: [info@cable-tec.net](mailto:info@cable-tec.net)  
HP: [www.cable-tec.net](http://www.cable-tec.net)

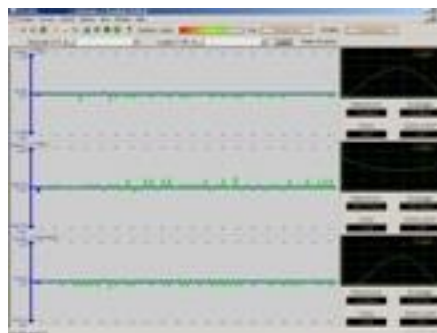


"Your monitoring specialist"  
certified ISO 9001 + ISO 14001

## Crimping Line



Visualization of the measuring via laptop



Measured values are displayed as histogram

Our Press Analyser PAL3001 offers you this verification with its state-of-the-art measuring technique:

- ⊗ Fast and safe
- ⊗ Immediate evaluation on the PC possible
- ⊗ Results of measurement can be stored and retrieved in a database
- ⊗ Reports can be printed in various formats
- ⊗ Notebook function for maintenance jobs

Job routines to test the presses are simple and require minimum expense of your time:

- ⊗ Replace the crimping tool by the PAL3001.
- ⊗ Connect it with your laptop (no further cabling necessary).
- ⊗ Start the program and the press – all parameters are calculated automatically.
- ⊗ After the second cycle all settings are made automatically.
- ⊗ After each cycle the current graphs are displayed. For the machine capability check a Cmk value will be calculated from all graphs.
- ⊗ With the programmable relay you can start/stop cycles with a mouse click.
- ⊗ All statistical data will be saved in the database for each press.

### Technical Data

⊗ Power	10x Mignon Accu NiMH, 2000mAh (only rechargeable batteries)
⊗ Charging device	100 – 240 VAC / 18 VDC
⊗ Battery capacity	3 hours continuous operation (charge display on PC)
⊗ Maximum force	20 kN
⊗ Force measurement resolution	25N
⊗ Shut height measurement	Optimum shut height ± 250 µm
⊗ Height measurement resolution	1 µm
⊗ Dimensions	140 x 90 x 140 mm
⊗ Weight	2.5 kg
⊗ Interface	RS232
⊗ Relay output	Potential free 24V DC (switching cycles programmable)