

Series 145

- You can measure surfaces in carbide, micro-lap finish.
- An inside-length standard is needed to accurately set the micrometer.

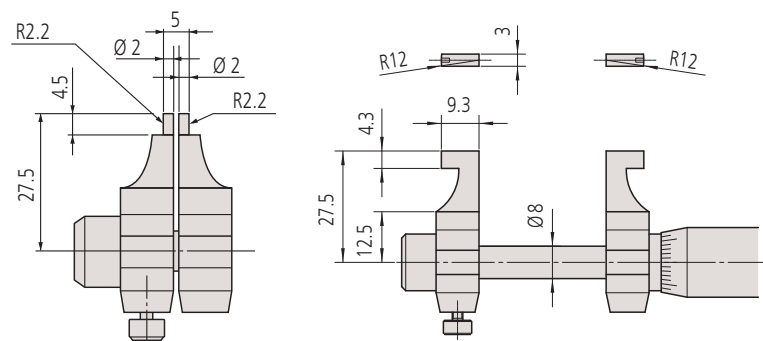


145-185

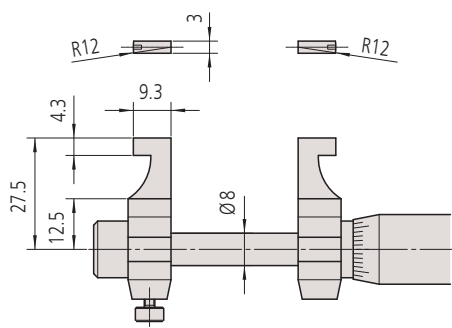


145-187

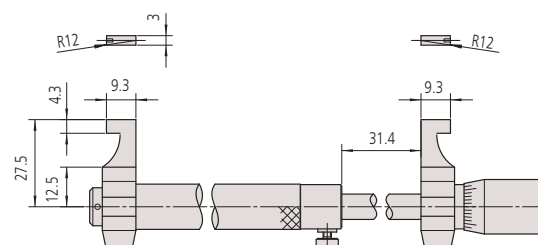
No.	Range [mm]	Accuracy [μm]	Mass [g]
145-185	5-30	±5	130
145-186	25-50	±6	140
145-187	50-75	±7	160
145-188	75-100	±8	180
145-189	100-125	±9	210
145-190	125-150	±9	230
145-191	150-175	±10	250
145-192	175-200	±10	270
145-217	200-225	±11	310
145-218	225-250	±11	330
145-219	250-275	±12	350
145-220	275-300	±12	370



145-185



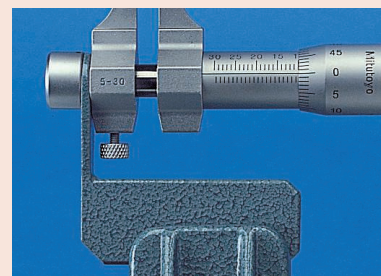
145-186



50-300 mm

Accuracy	Refer to the list of specifications
Scale	Thimble and sleeve satin chrome finish, $\varnothing 18$ mm
Measuring surfaces	Carbide tipped
Measuring spindle	With spindle lock, spindle pitch 0,5 mm
Graduation	0,01 mm
Measuring force	1-6 N
Delivered	Including box, key

No.	Description
300400	Holder
300401	Cap



Holder and cap for:
145-185, 145-186, 145-193, 145-194